

Planning Committee Meeting

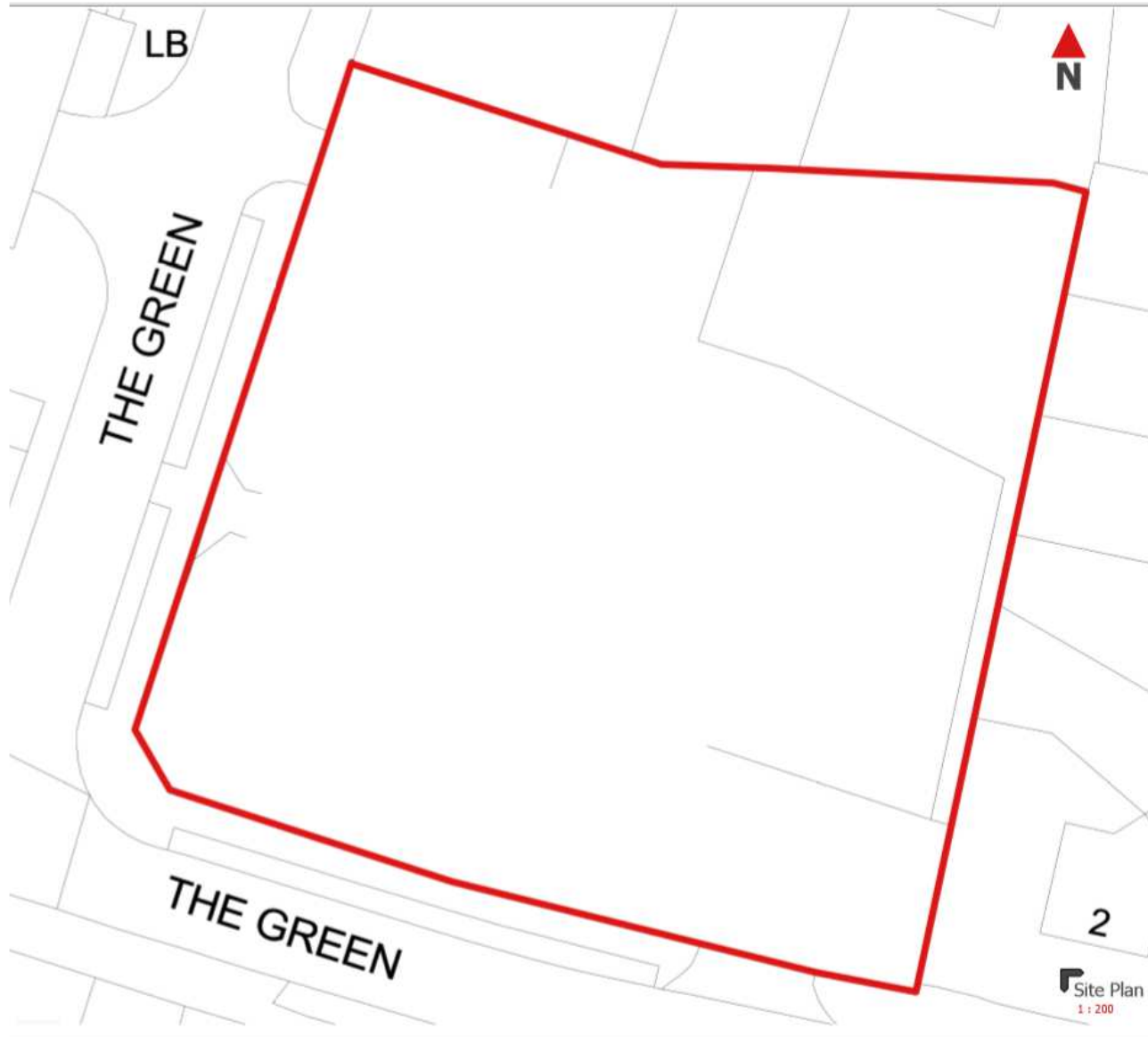
16 September 2020

PA/344182/19: Erection of a building comprising 21 apartments (15 x one bedroom and 6 x two bedroom), with access, car park, bin store and soft landscaping, including up to 2.1m high boundary enclosures.

4 The Green, Oldham, OL8 2LT



Site Location Plan



Aerial view from the south



Looking east along The Green (site behind wall)



Panning left from previous view



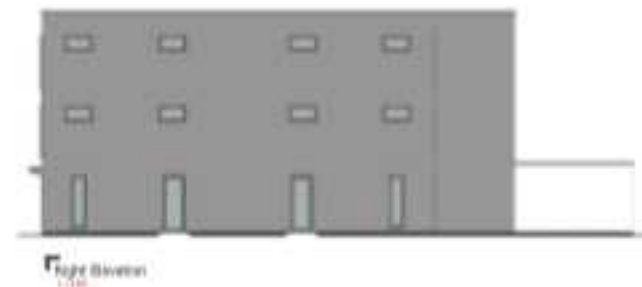
Residential types opposite the site



Proposed layout



Proposed principal elevations



Visual from the east



Visual from the west



Aerial view from the south

